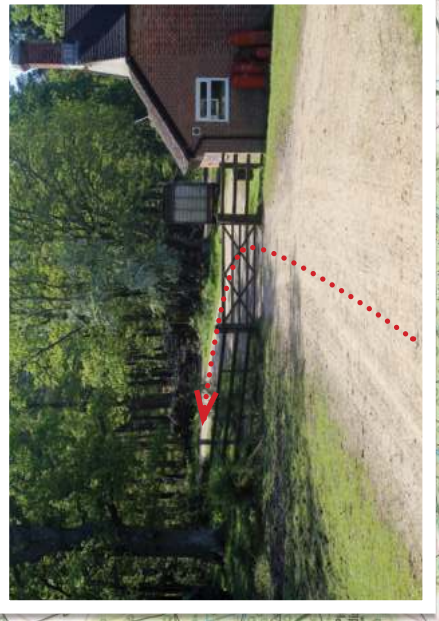
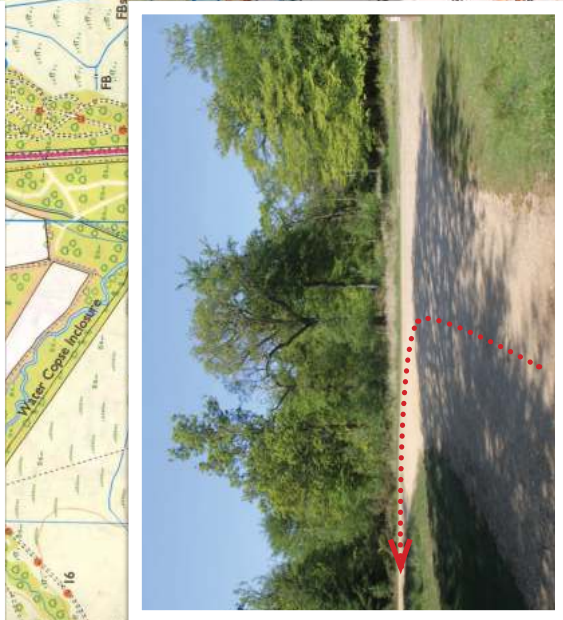




Beaulieu Rd, Beaulieu, Brockenhurst,
Hampshire SO42 7YQ.
t: 023 8084 5092



28km
DENNYWOOD / PARKHILL
INCLOSURE/BEAULIEU



KEY

- 

= Road crossing
- 

= Route
- 


= Road crossing
- 


= Direction of travel


Admire the ponies without getting too close!


Ponies are extremely protective of their young. Never stand between a mare and its foal. Be aware that ponies gallop and may move very quickly!
Angry ponies will kick or bite when threatened.

OTHER ROUTES

- 

5km
YEW TREE HEATH
HISTORY OF WORLD WAR 2
- 

9km
GURNETFIELD FURZEBRAKE
- 

19km
DENNYWOOD / PARKHILL INCLOSURE
- 

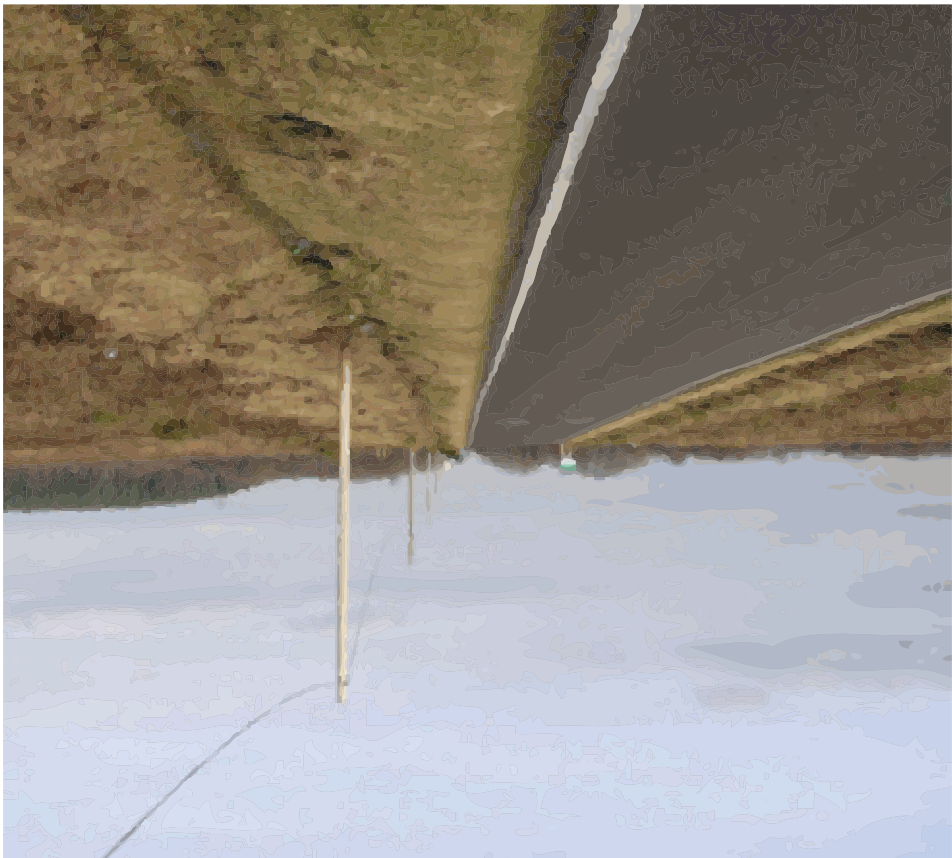
21km
ELING



Potential hazards

The first three kilometres of the route are on roads. Although not busy, care should be taken at all times as traffic can move very fast without leaving adequate 'overtaking' distance.

Once Furzey Lodge has been passed, the majority of the remaining route is on roads. Particular attention should be paid to the 1.5km section between Hatchet Pond and Beaulieu as that is often more traffic heading towards Beaulieu.



Points of interest

Parts of the route travel through the medieval deer hunting enclosures Park Pale (Also known as Old Lyndhurst Park), which dates back to the 13th century. At various points along the route, your path is intersected by a bank and ditch style boundary, which is the remains of the perimeter wall of the enclosure.

The section of track running between Denny Wood and the Parkhill Inclosure, is one of the older parts of the forest. And is certainly the most scenic part of the route.

The latter part of the route passes Beaulieu; a scenic New Forest town, home to Lord Montagu. Its boasts beautiful terraced houses and an ancient monastery founded in 1204 by King John. It is also home to an Abbey church built in 1246. The Abbey fell into ruins following the dissolution of monasteries by King Henry the VIII. However later become the parish church of Beaulieu.

